

DYNAMIC MODEL



THE HOMES IN THIS COLLECTION ARE FUNCTIONAL WITH SOME ARCHITECTURAL DYNAMISM IN ITS DESIGN. WITH MAXIMUM OPTIMIZATION OF SPACE.

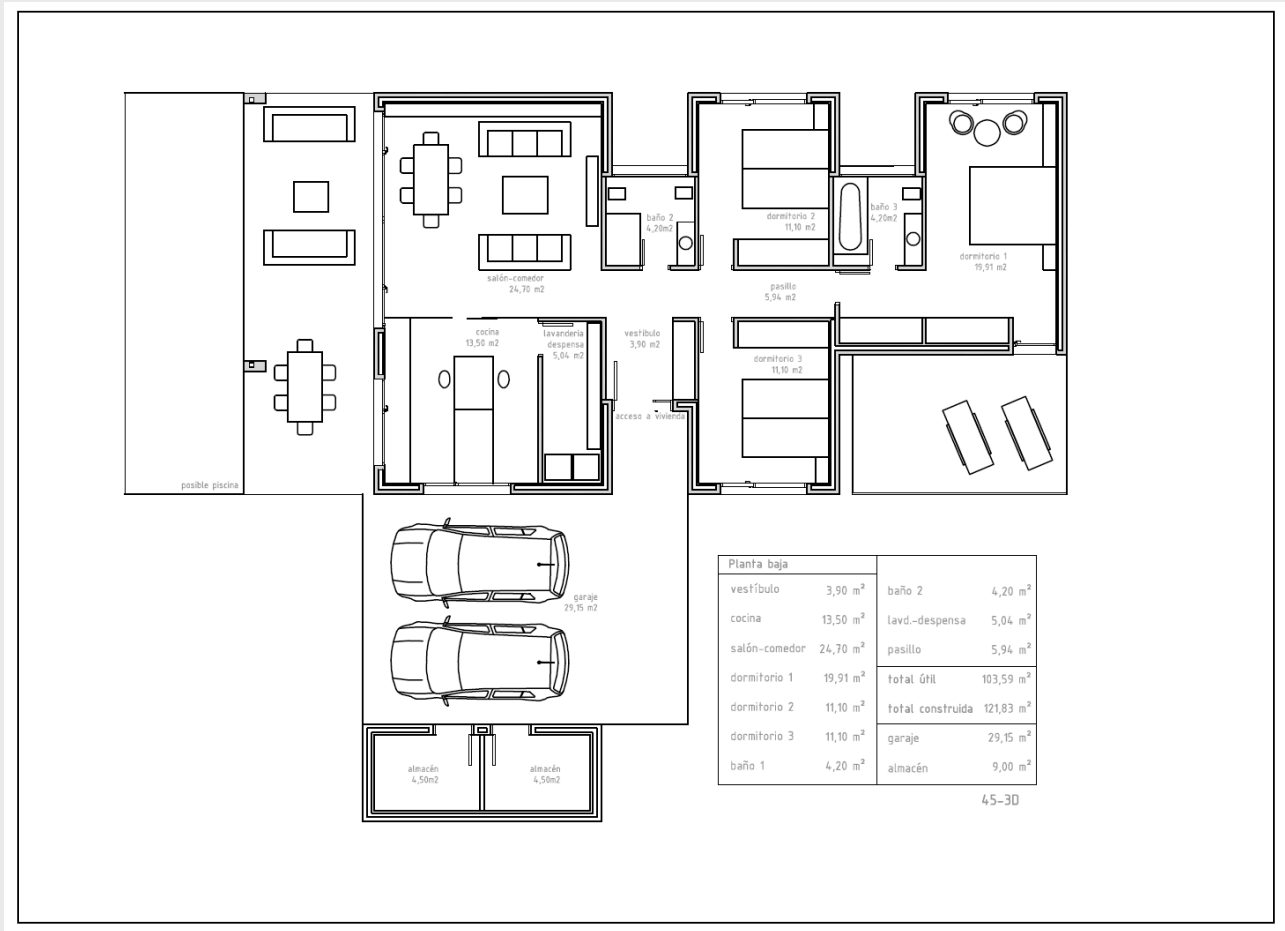
ON FLOOR, YOU CAN HAVE THREE AND FOUR BEDROOMS.

IN A DUPLEX HOUSE CONSTRUCTED ON TWO FLOORS, THERE CAN BE THREE BEDROOMS (A MASTER BEDROOM WITH DRESSING AREA) OR FOUR BEDROOMS.

COMPLETELY OPEN TO THE PORCH, WITH A PANORAMIC WINDOW, LIVING ROOM HAS A TOTALLY OPEN DESIGN LOOKING OUT TO THE GARDEN AND POOL AREA.

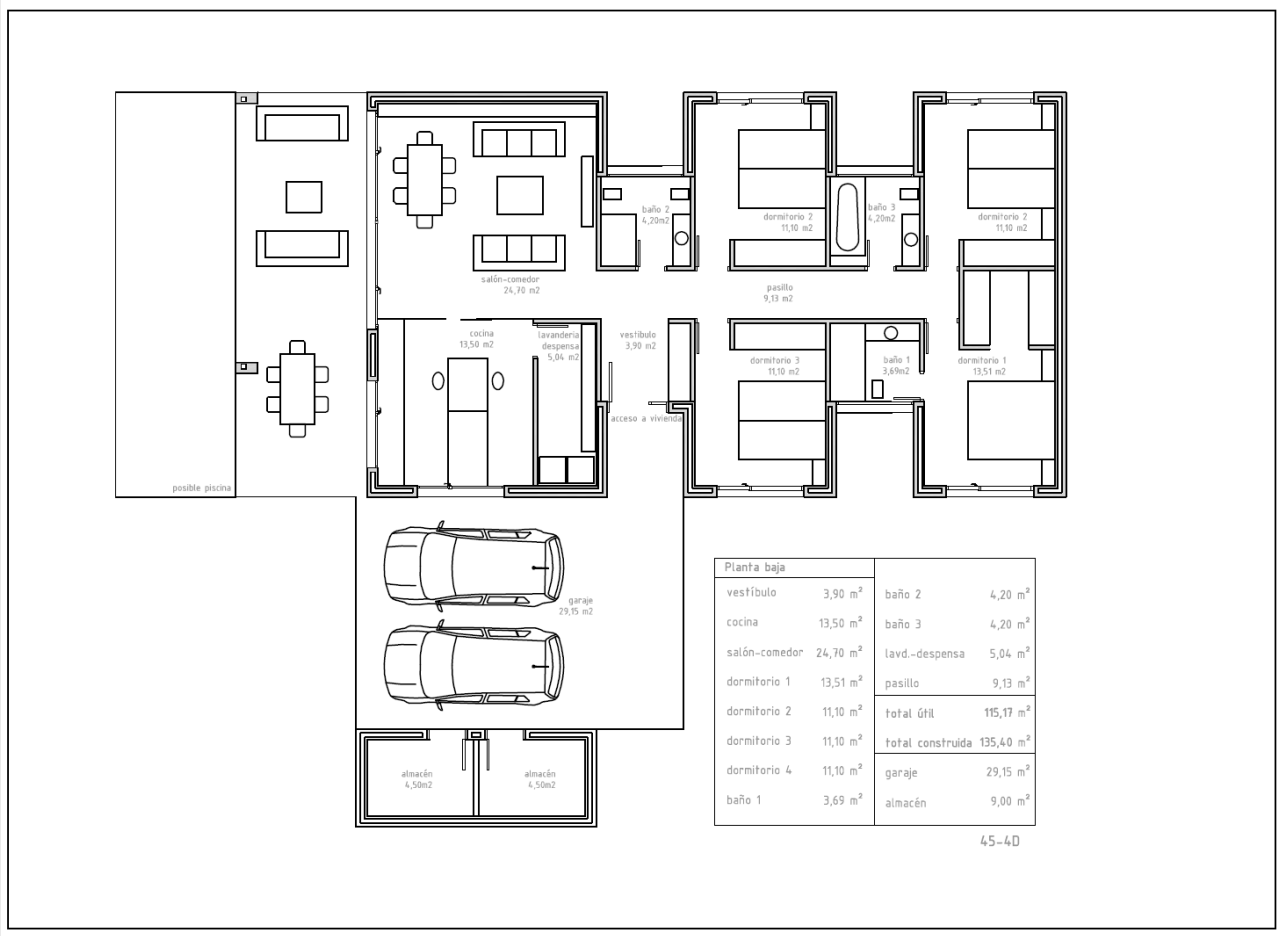
TYPE OF HOUSE

3 BEDROOMS



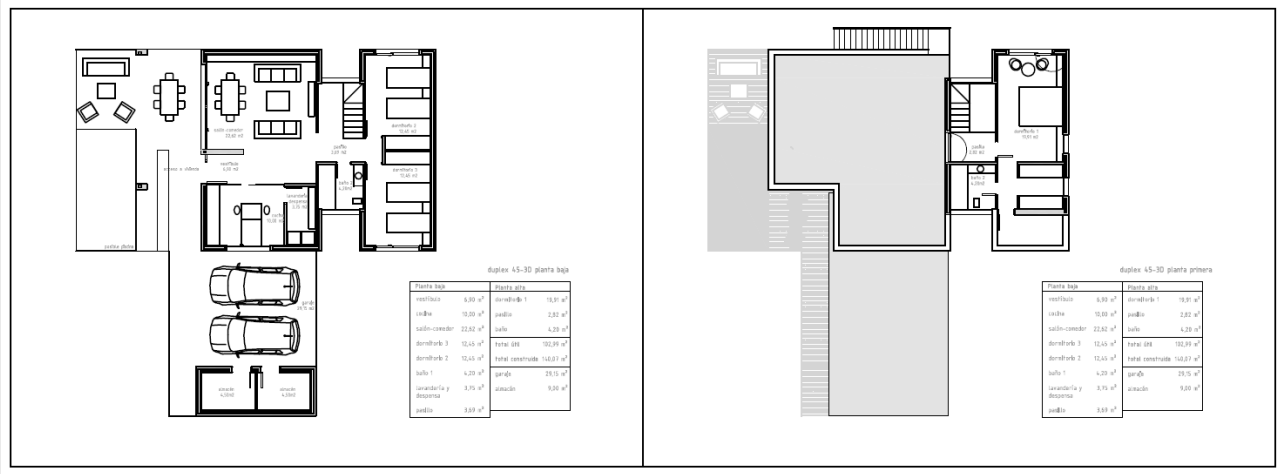
THE PLANS ALSO REPRESENT HOUSING MODULE OPTIONS

4 BEDROOMS



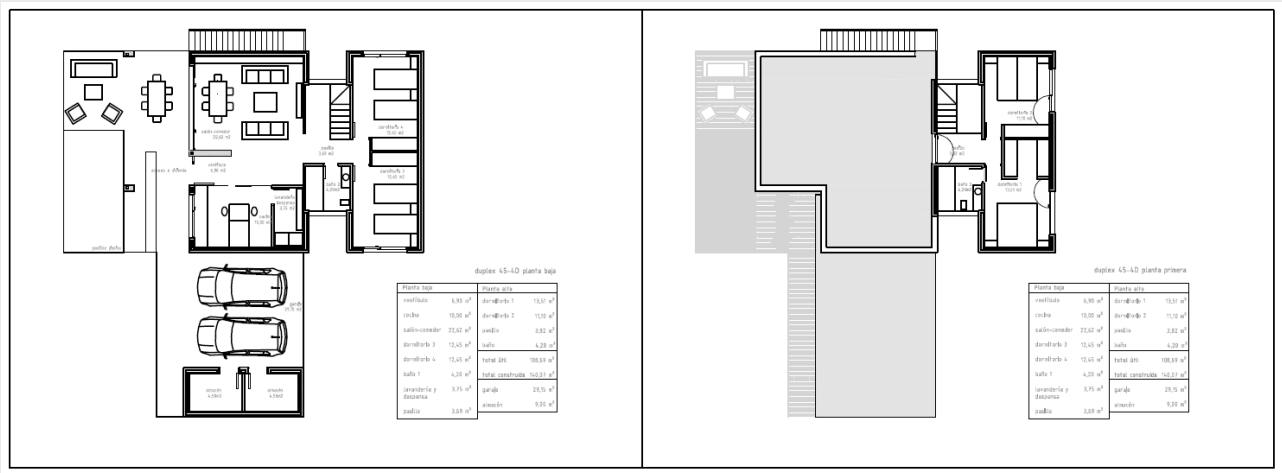
THE PLANS ALSO REPRESENT HOUSING MODULE OPTIONS

DÚPLEX 3 BEDROOMS



THE PLANS ALSO REPRESENT HOUSING MODULE OPTIONS

DÚPLEX 4 BEDROOMS



THE PLANS ALSO REPRESENT HOUSING MODULE OPTIONS