

VANGUARD COLLECTION TOWNHOUSE



VANGUARD COLLECTION TOWNHOUSE: HIS COLLECTION IS DESIGNED HOMES ON CONDITIONAL PLOTS UTILIZING URBAN TYPOLOGY.

BELONGINGS TO THE VANGUARD COLLECTION MAINTAINING ITS CONCEPTS IN THIS COLLECTION.

NORMALLY OPEN COMPLEX CREATING A VOLUME THAT DOES NOT GO UNNOTICED WITH ITS SLOPING LINES, CREATING GREAT VISUAL IMPACT.

OPTIMIZING ALL SURFACE AREA AVAILABLE AND CREATING ENVIRONMENTS THAT BRING HARMONY AND WARMTH TO THE HOME.

THE PROPERTY COMPRISES OF BASEMENT, GROUND FLOOR, FIRST FLOOR AND SECOND FLOOR.

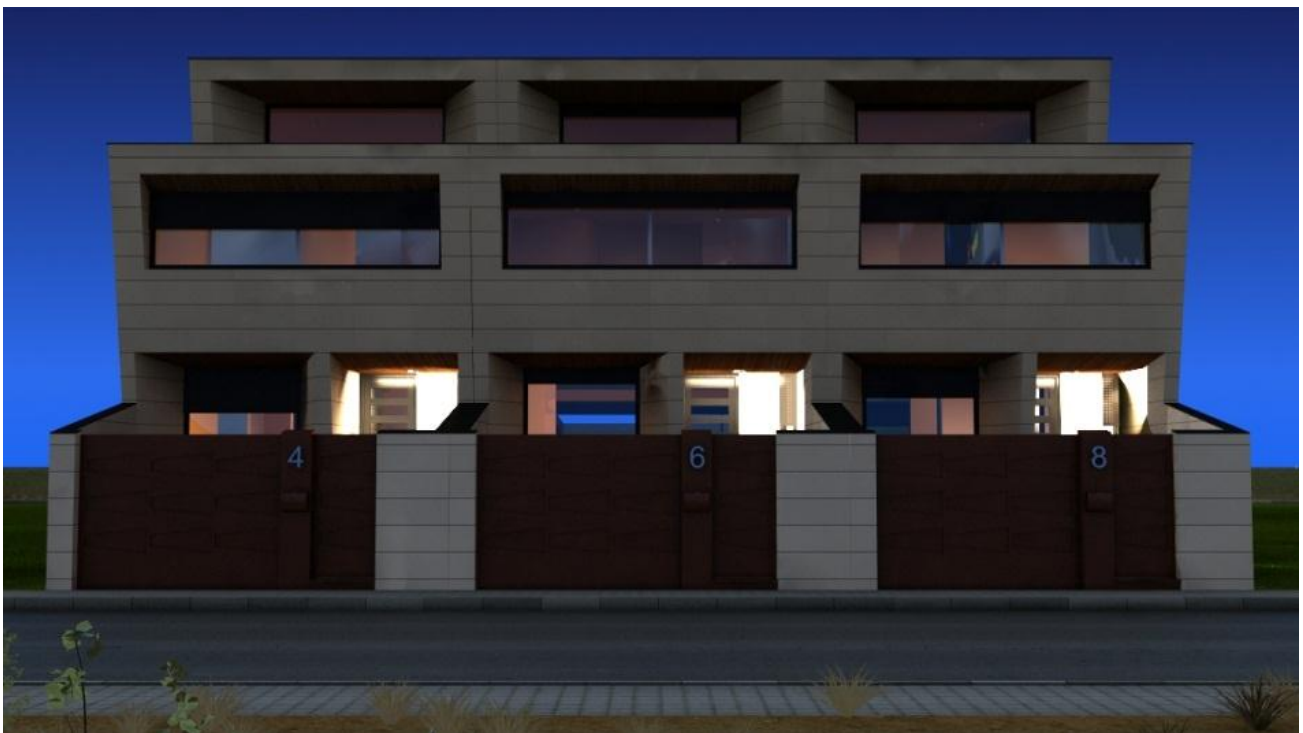
THERE ARE TWO OPTIONS, A SWIMMING POOL IN THE BACK, OR PATIO ENGLISH TO GIVE THE BASEMENT FLOOR OF A LIVING AREA WITH NATURALLY LIGHT.

DEPENDING ON THE OPTION CHOSEN BASEMENT DISTINGUISHED A GARAGE AREA.

ON THE GROUND FLOOR THERE ARE ALSO 2 OPTIONS KITCHEN, AN OPTION WITH INDEPENDENT KITCHEN, AND OTHER OPTION A KITCHEN WITH CENTRAL ISLAND IN THE MIDDLE. IN BOTH CASES, THE FLOOR IS OPEN TO A LARGE TERRACE - PORCH.

THE FIRST FLOOR HAS 3 LARGE BEDROOMS WITH LARGE GLAZED WINDOWS OPENINGS; THE POSSIBILITY EXISTS TO MAKE 4 BEDROOMS.

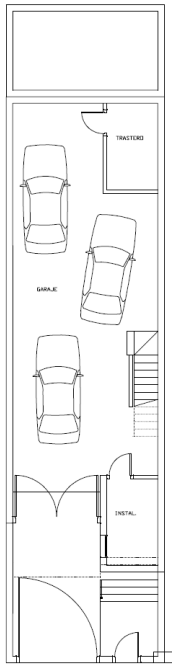
UPPER FLOOR HAS AN OPEN SPACE AVAILABLE FOR OTHER USES.



TYPOLOGY OF HOUSING

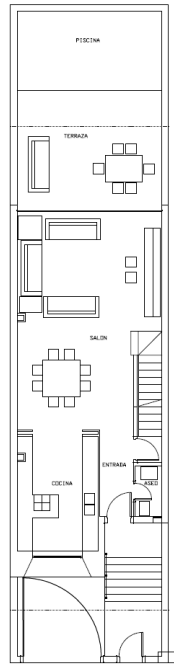
TOWNHOUSE SWIMMING POOL

OPTION 1 . INDEPENDENT KITCHEN



3D-3 en hilera
Con piscina
Semisótano

| SUPERFICIE CONSTRUIDA (M2) | |
|----------------------------|--------|
| TOTAL | 214,25 |
| SEMISOTANO | 122,70 |
| PLANTA BAJA | 78,13 |
| PLANTA 1 | 85,96 |
| BAJO CUBIERTA | 48,56 |

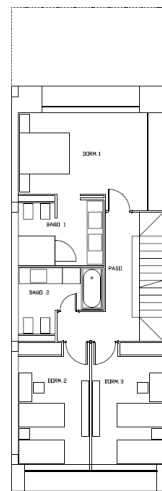


3D-3 en hilera
Con piscina
Planta baja

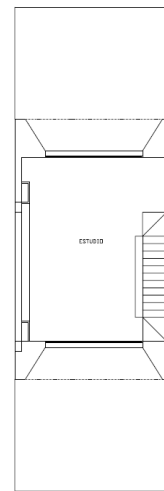
| SUPERFICIE UTIL (M2) | |
|----------------------|--------|
| TOTAL | 257,42 |
| SEMISOTANO | 80,38 |
| PLANTA BAJA | 65,20 |
| PLANTA 1 | 69,75 |
| BAJO CLUB | 37,48 |

| | |
|-----------------|-------|
| SARAJE | 30,23 |
| SALON | 46,90 |
| INSTALACIONES | 6,35 |
| ESCALERA | 4,42 |
| ENTRADA | 4,20 |
| SALON | 41,42 |
| COCINA | 13,35 |
| ASEO | 1,95 |
| ESCALERA | 4,42 |
| DEPOSITO/BIENES | 7,40 |
| DORM 1 | 18,42 |
| DORM 2 | 12,53 |
| DORM 3 | 12,53 |
| BANO 1 | 7,62 |
| BANO 2 | 6,62 |
| ESCALERA | 4,42 |
| ESTUDIO | 36,42 |

| | |
|-----------------|-------|
| TERRAZA | 25,13 |
| VASO DE PISCINA | 16,30 |



3D-3 en hilera
Con piscina
Planta 1

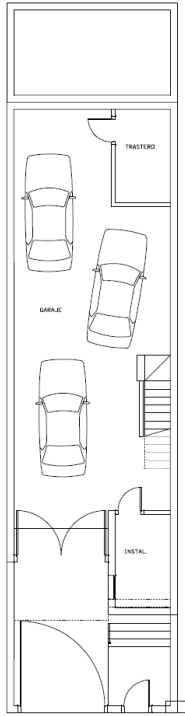


3D-3 en hilera
Con piscina
Bajo cubierta

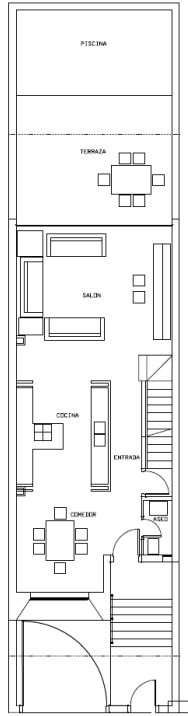
SURFACE: 314,25 SQ.

TOWNHOUSE SWIMMING POOL

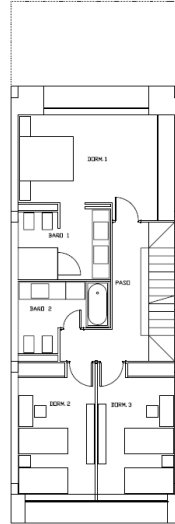
OPTION 2. KITCHEN WITH CENTRAL ISLAND



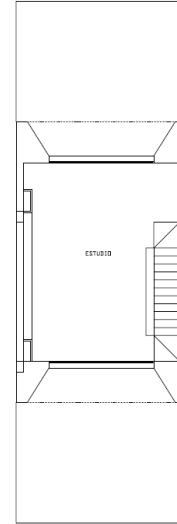
3D-4 en hilera
Con piscina
Semisótano



3D-4 en hilera
Con piscina
Planta baja



3D-4 en hilera
Con piscina
Planta 1



3D-4 en hilera
Con piscina
Bajo cubierta

| SUPERFICIE CONSTRUIDA (M2) | |
|----------------------------|--------|
| TOTAL | 314,25 |
| SEMISOTANO | 121,71 |
| PLANTA BAJA | 78,11 |
| PLANTA 1 | 85,89 |
| BAJO CUBIERTA | 48,54 |

| SUPERFICIE UTIL. (M2) | |
|-----------------------|--------|
| TOTAL | 256,50 |
| SEMISOTANO | 85,38 |
| PLANTA BAJA | 64,43 |
| PLANTA 1 | 69,73 |
| BAJO CUB. | 37,66 |

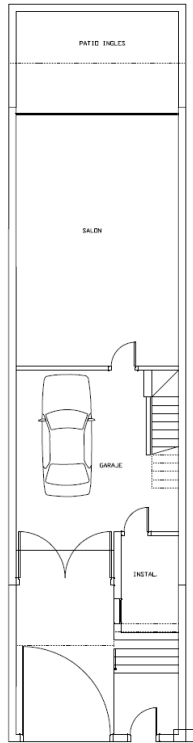
| | |
|-----------------|-------|
| TERRAZA | 25,15 |
| BAJO DE PISCINA | 16,56 |

| | |
|---------------|-------|
| GARAJE | 30,05 |
| SALON | 46,90 |
| INSTALACIONES | 0,37 |
| ESCALERA | 4,43 |
| ENTRADA | 6,73 |
| SALON | 39,90 |
| COCINA | 11,90 |
| COMEDOR | 11,45 |
| ASEO | 1,95 |
| ESCALERA | 4,40 |
| DISTRIBUIDOR | 7,40 |
| DORM.1 | 10,40 |
| DORM.2 | 12,55 |
| DORM.3 | 12,55 |
| BANO.1 | 7,85 |
| BANO.2 | 6,60 |
| ESCALERA | 4,40 |
| ESTUDIO | 30,60 |

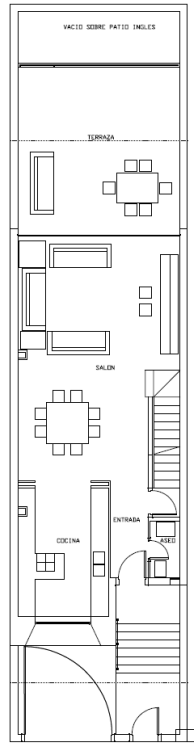
SURFACE: 314,25 Sq.

TOWNHOUSE ENGLISH COURTYARD

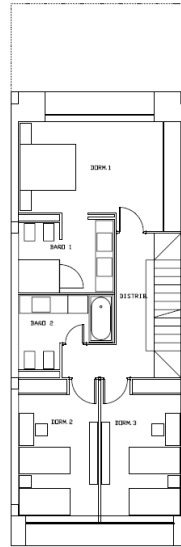
OPTION I . INDEPENDENT KITCHEN



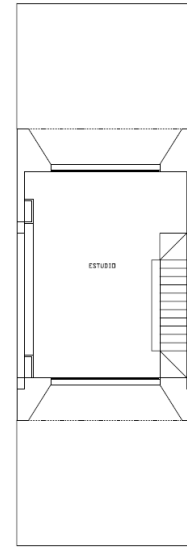
3D-1 en hilera
Semisótano



3D-1 en hilera
Planta baja



3D-1 en hilera
Planta 1



3D-1 en hilera
Bajo cubierta

| SUPERFICIE CONSTRUIDA (M2) | |
|----------------------------|--------|
| TOTAL | 314,25 |
| SEMISOTANO | 152,76 |
| PLANTA BAJA | 78,15 |
| PLANTA 1 | 85,86 |
| BAJO CUBIERTA | 48,48 |

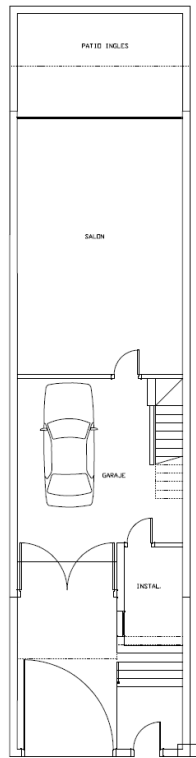
| SUPERFICIE UTIL. (M2) | |
|-----------------------|--------|
| TOTAL | 297,43 |
| SEMISOTANO | 89,36 |
| GARAJE | 32,05 |
| SALÓN | 46,90 |
| INSTALACIONES | 6,25 |
| PLANTA BAJA | 63,33 |
| ESCALERA | 4,40 |
| ENTRADA | 4,20 |
| SALÓN | 41,45 |
| COCINA | 19,30 |
| BAÑO | 1,90 |
| PLANTA 1 | 69,79 |
| ESCALERA | 4,40 |
| DISTRIBUIDOR | 7,40 |
| DORM.1 | 18,40 |
| DORM.2 | 12,00 |
| DORM.3 | 12,55 |
| BAÑO.1 | 7,80 |
| BAÑO.2 | 6,60 |
| BAJO CUB. | 37,00 |
| ESCALERA | 4,40 |
| ESTUDIO | 32,60 |

| | |
|--------------|-------|
| TERRAZA | 37,00 |
| PATIO INGLÉS | 18,95 |

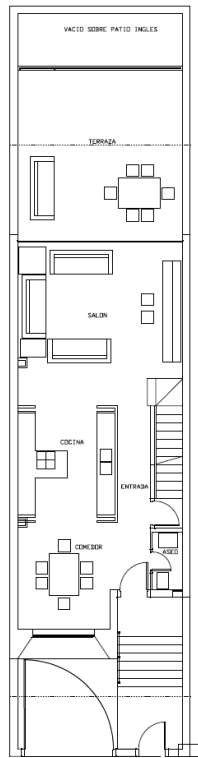
SURFACE: 314,25 SQ.

TOWNHOUSE ENGLISH COURTYARD

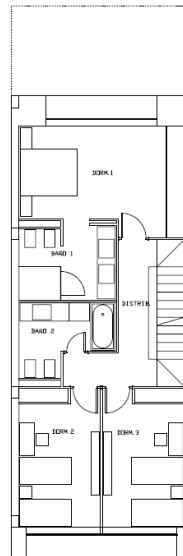
OPTION 2. KITCHEN WITH CENTRAL ISLAND



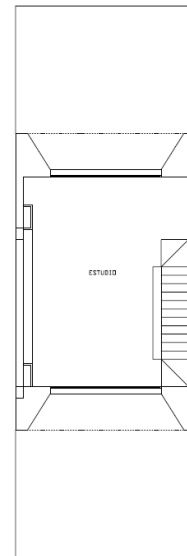
3D-2 en hilera
Semisótano



3D-2 en hilera
Planta baja



3D-2 en hilera
Planta 1



3D-3 en hilera
Bajo cubierta

| SUPERFICIE CONSTRUIDA (M2) | |
|----------------------------|--------|
| TOTAL | 314,25 |
| SEMISOTANO | 102,72 |
| PLANTA BAJA | 78,13 |
| PLANTA 1 | 85,84 |
| BAJO CUBIERTA | 46,56 |

| SUPERFICIE UTIL (M2) | |
|----------------------|--------|
| TOTAL | 456,58 |
| SEMISOTANO | 85,38 |
| PLANTA BAJA | 64,45 |
| PLANTA 1 | 65,75 |
| BAJO CUB. | 37,00 |
| GARAJE | 32,00 |
| SALON | 46,90 |
| INSTALACIONES | 6,25 |
| ESCALERA | 4,40 |
| ENTRADA | 6,75 |
| SALON | 88,90 |
| COCINA | 13,30 |
| COMEDOR | 11,40 |
| ASEO | 1,90 |
| ESCALERA | 4,40 |
| DISTRIBUIDOR | 7,40 |
| DORM. 1 | 18,40 |
| DORM. 2 | 12,50 |
| DORM. 3 | 12,50 |
| BAÑO 1 | 7,80 |
| BAÑO 2 | 6,60 |
| ESCALERA | 4,40 |
| ESTUDIO | 30,60 |

| | |
|-------------|-------|
| TERRAZA | 32,00 |
| PATIO INGLE | 18,90 |

SURFACE: 314,25 SQ.